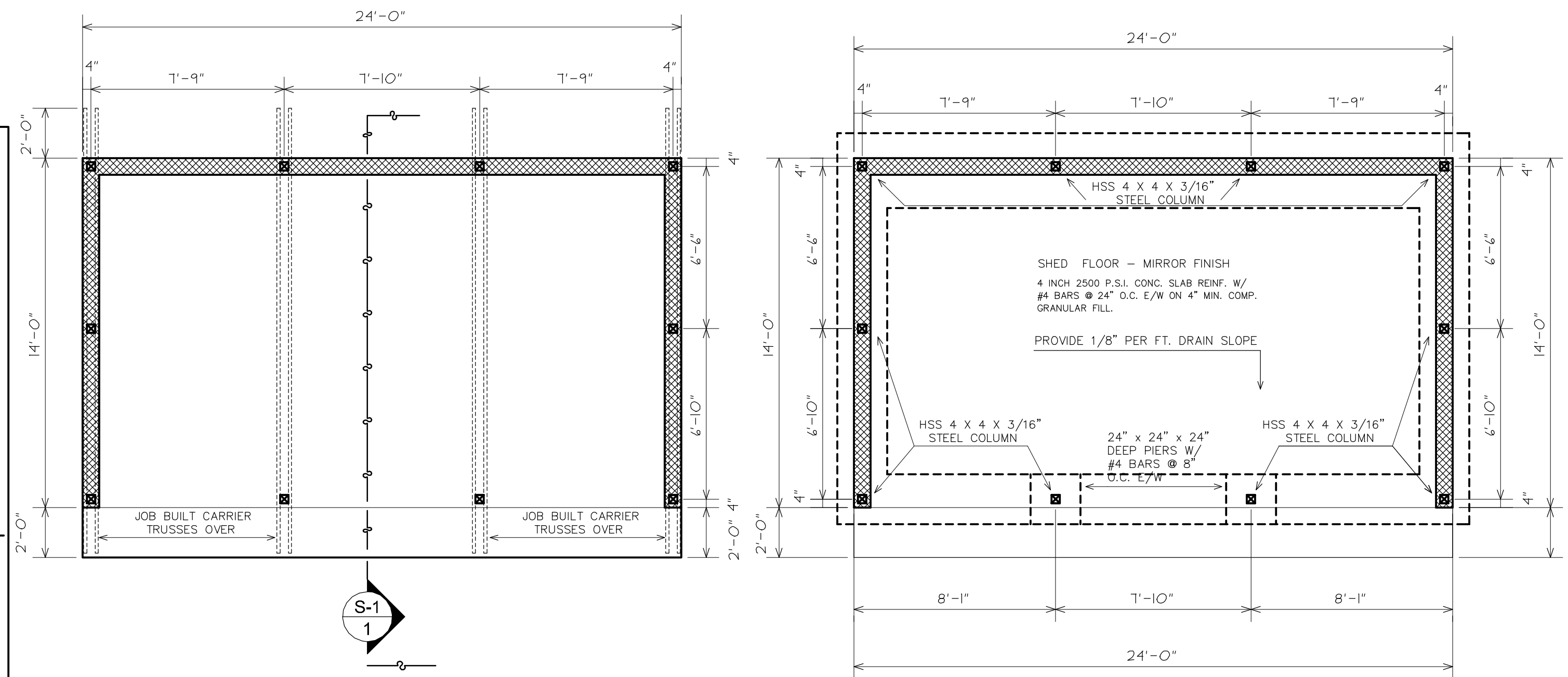


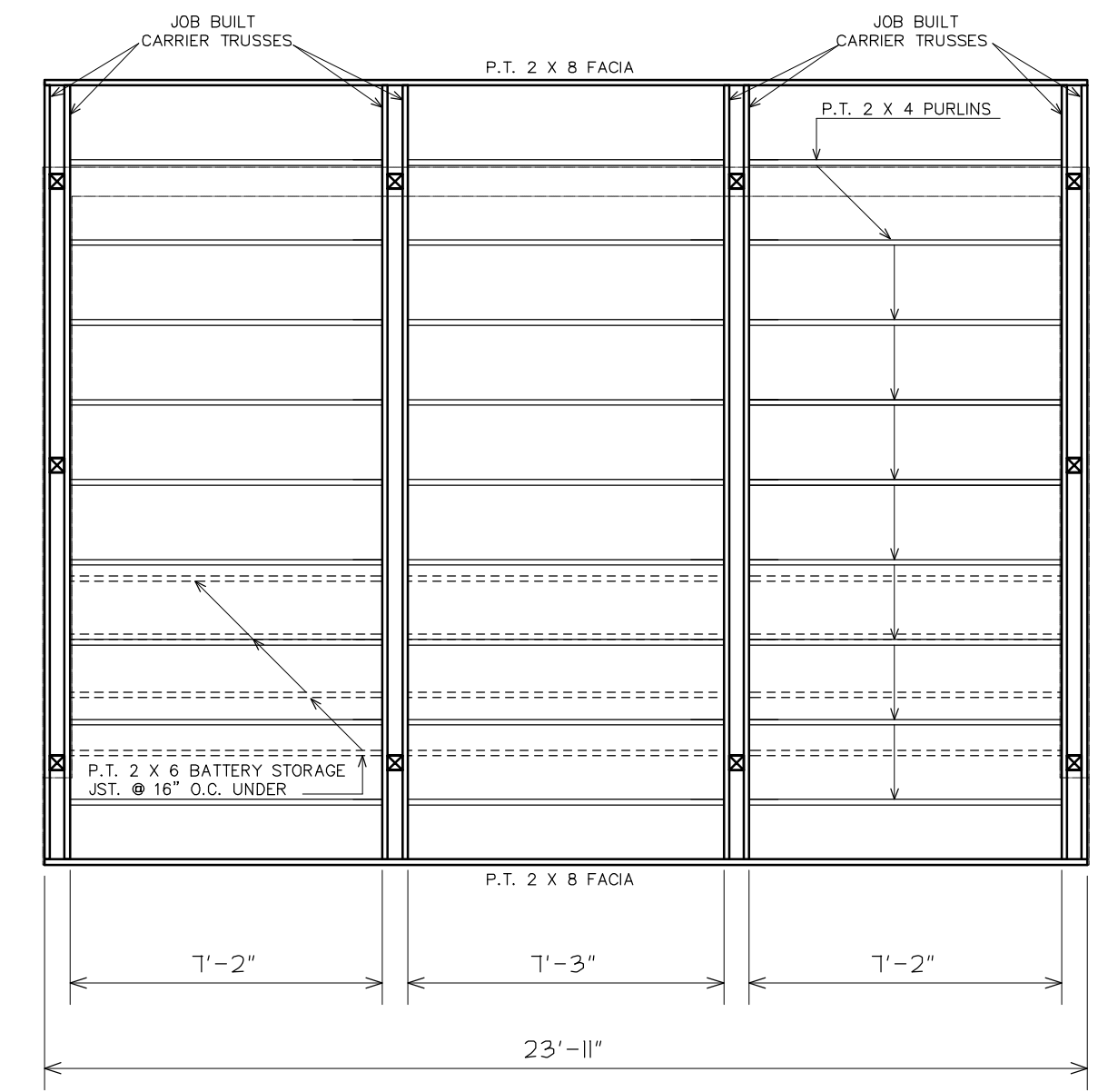
INDEX	DESCRIPTION	6' - 7" BACKFILL	4' - 6" BACKFILL	2' - 4" BACKFILL
A	MAX. BACKFILL HEIGHT	6' - 8"	4' - 6"	2' - 4"
B	TOTAL FOOTING WIDTH	4'-0"	3'-3"	2'-4"
C	HEEL LENGTH	1'-10"	1'-4"	0'-8"
D	TOE LENGTH	2'-2"	1'-11"	1'-8"
E	STEMWALL WIDTH	8"	8"	8"
F	FOOTING DEPTH	10"	10"	8"
G	STEMWALL VERT. STEEL	#4 @ 16"	#4 @ 16"	#4 @ 16"
H	STEMWALL HORIZ. STEEL	#4 @ 16"	#4 @ 16"	#4 @ 16"
K	STEMWALL STEEL SPLICE LENGTH	36"	30"	24"
L	FOOTING LONGITUDINAL STEEL	#4 @ 12"	#4 @ 12"	#4 @ 12"
M	HEEL STEEL	#4 @ 16"	#4 @ 16"	#4 @ 16"
N	TOE STEEL	#4 @ 8"	#4 @ 8"	#4 @ 16"

D-1
FOUNDATION DETAIL 1/2"=1'

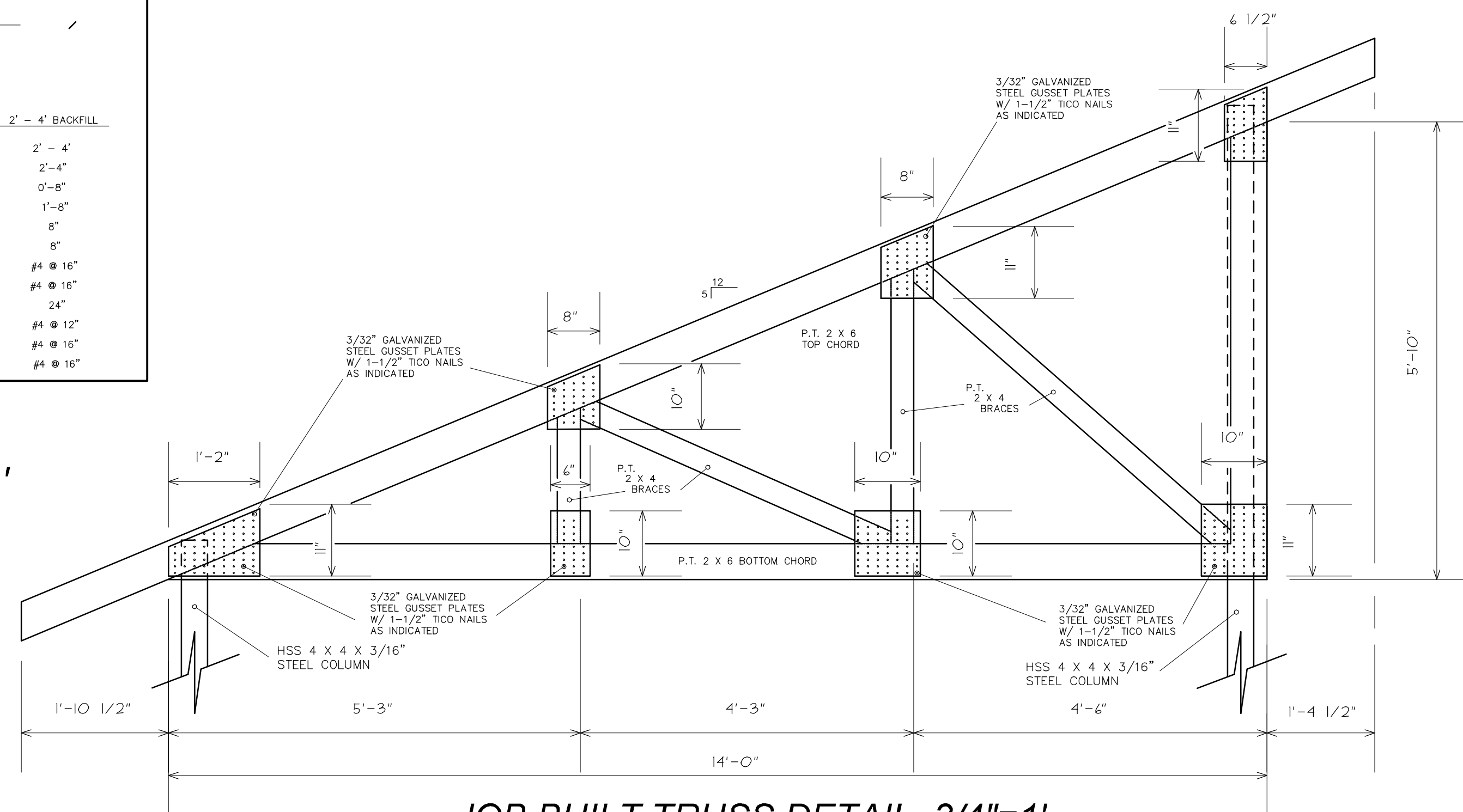


S-1
FLOOR PLAN 1/4"=1'

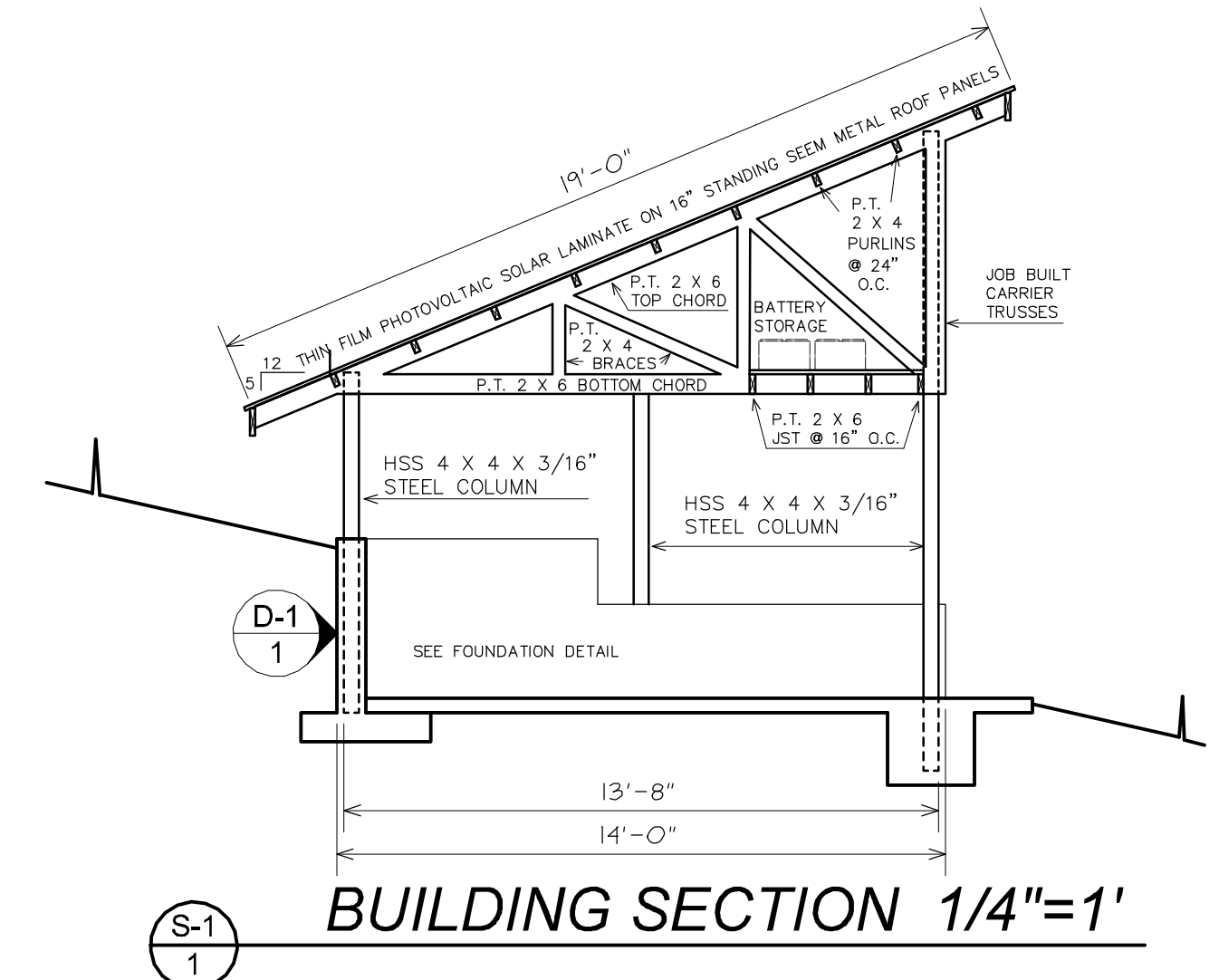
FOUNDATION PLAN 1/4"=1'



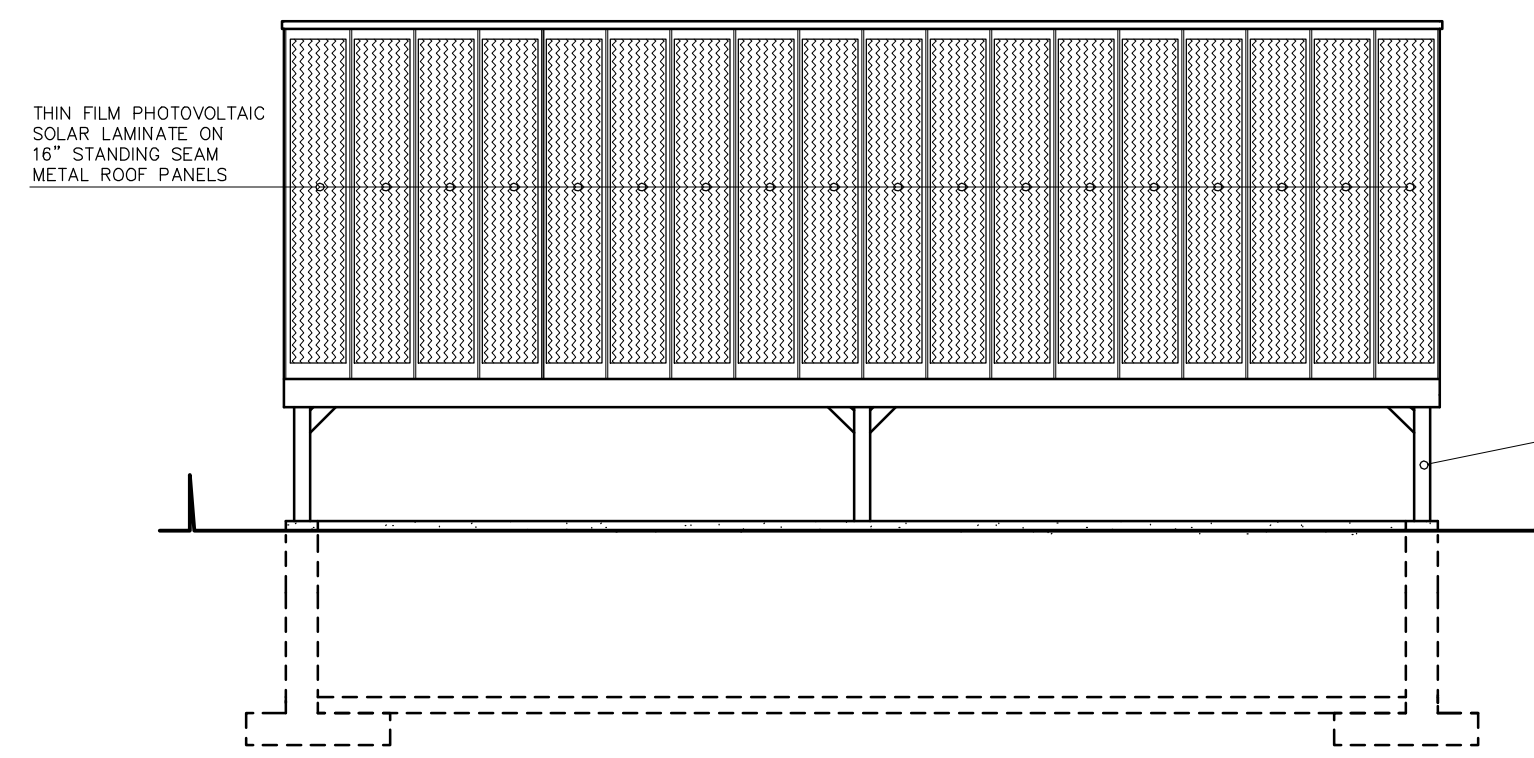
ROOF FRAMING PLAN 1/4"=1'



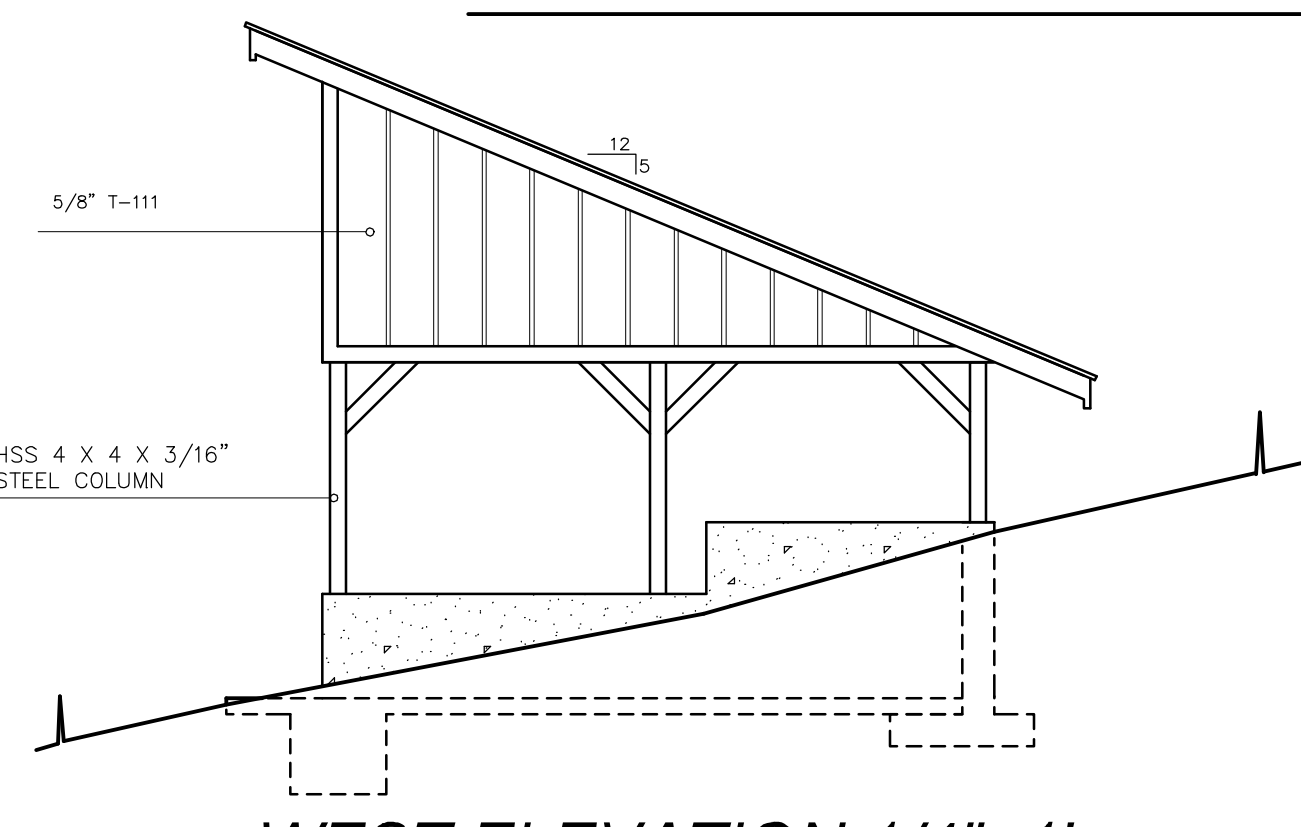
JOB BUILT TRUSS DETAIL 3/4"=1'



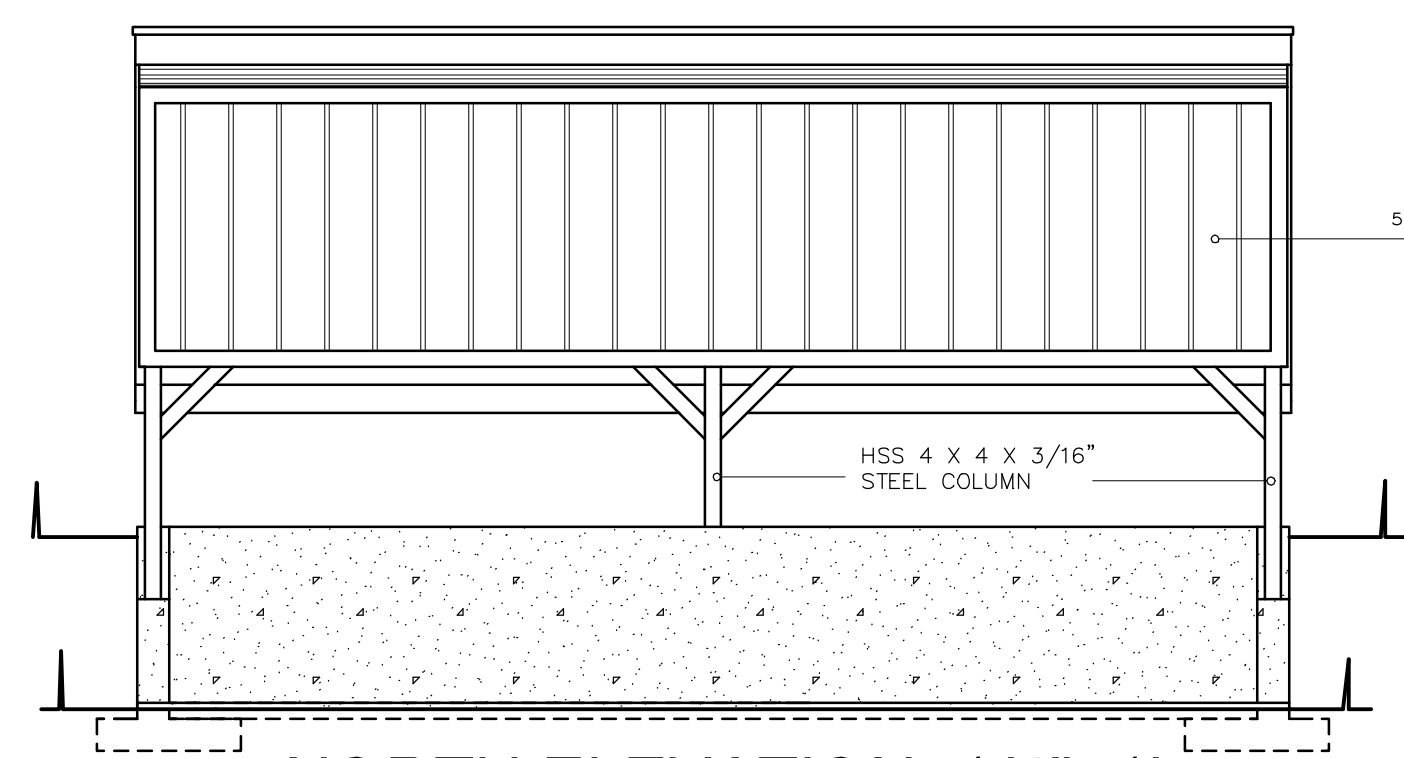
D-1
S-1
BUILDING SECTION 1/4"=1'



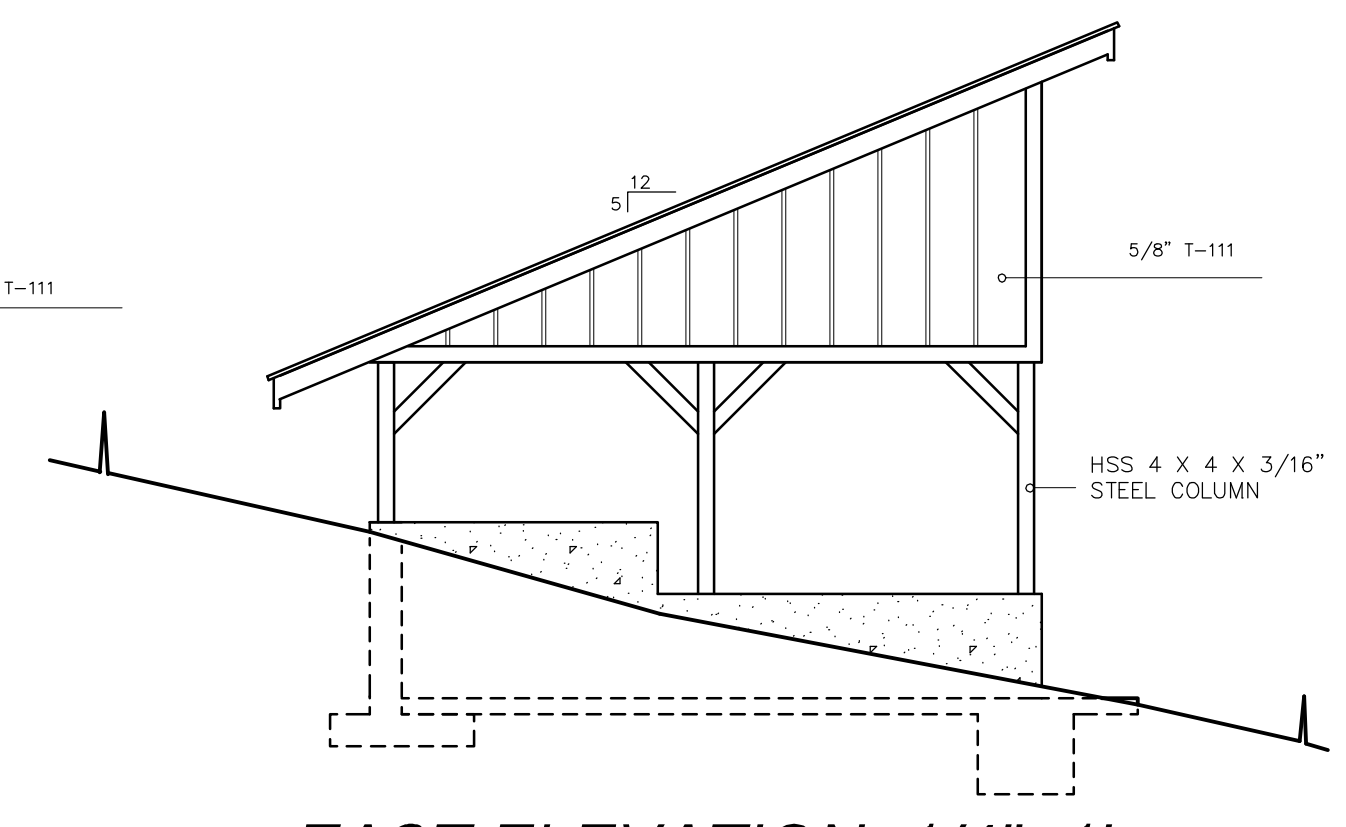
SOUTH ELEVATION 1/4"=1'



WEST ELEVATION 1/4"=1'



NORTH ELEVATION 1/4"=1'



EAST ELEVATION 1/4"=1'

REVISIONS	BY

SANDERS HOME DESIGNS
704 PIONEER ST. PHILMATH OR. 97370 (541) 929-1284

LAKE SOLAR SHED
LAKE AGUAMILPA

DRAWN : DS
CHECKED : DS
DATE : 09/01/10
SCALE : AS NOTED
JOB NO. : 10-0901
SHEET

OF 1 SHEETS