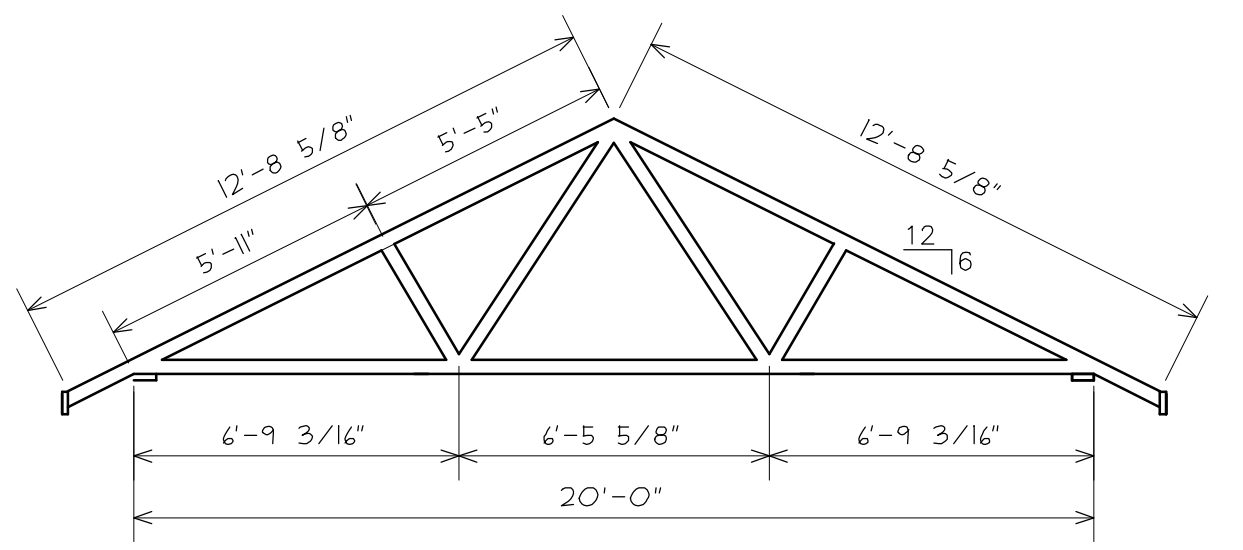
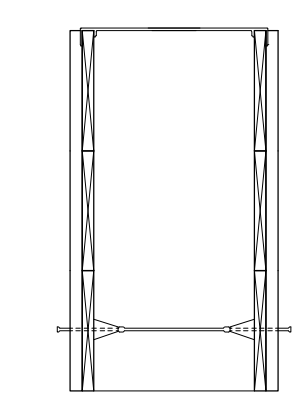


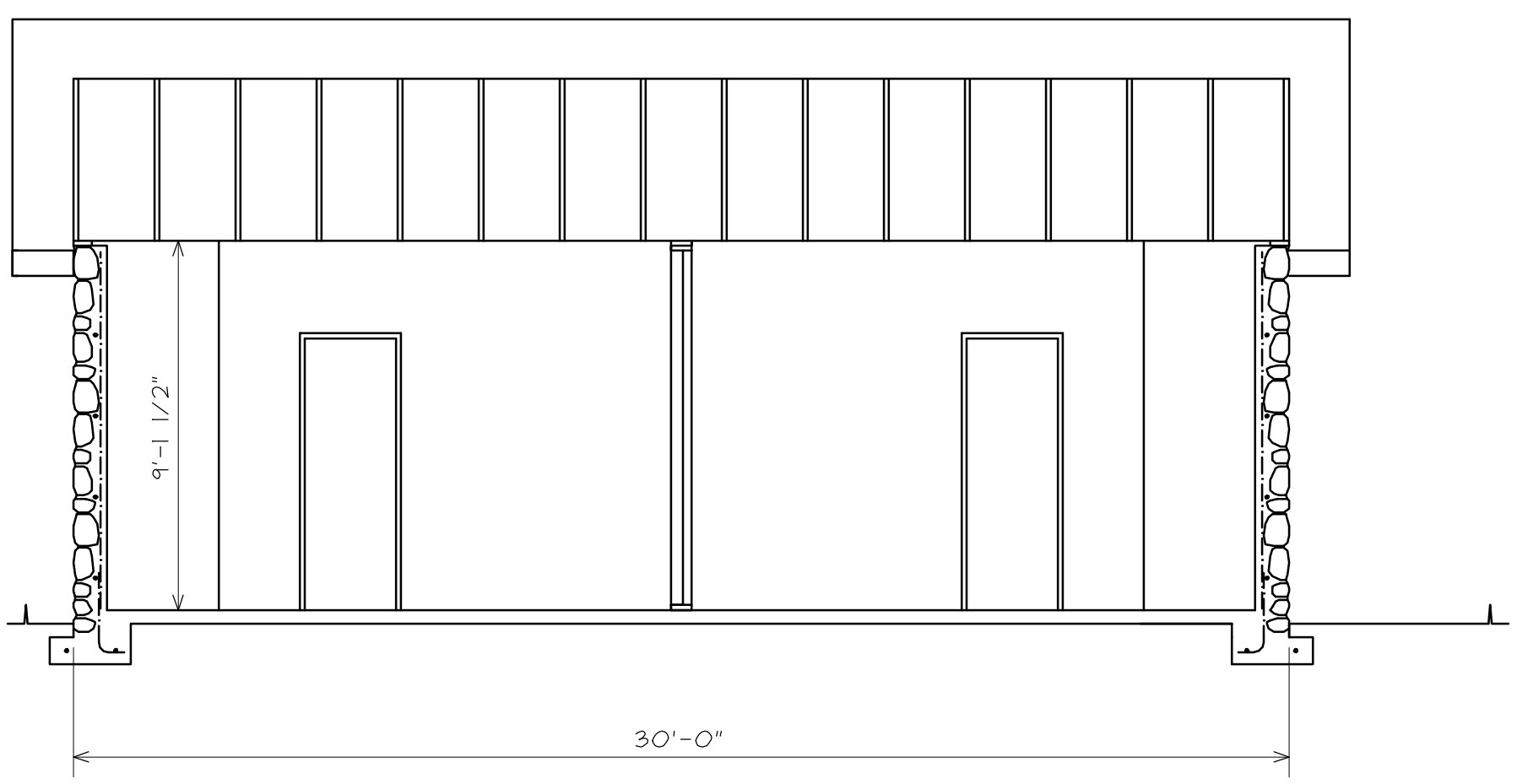
ALTERNARE JOB BUILT TRUSS DETAIL 1/4"=1'
HOUSE



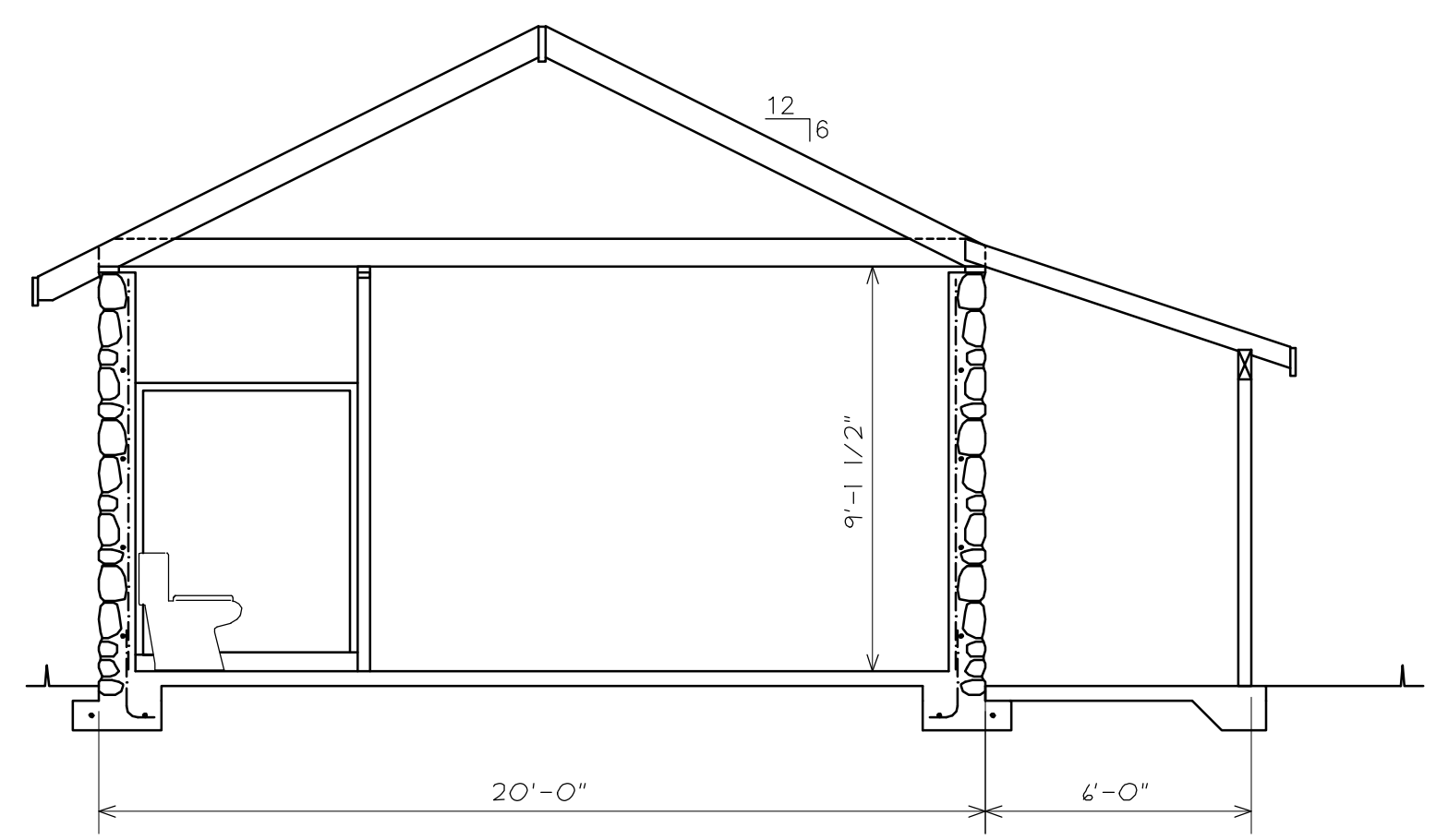
ALTERNARE JOB BUILT TRUSS DETAIL 1/4"=1'
CABIN



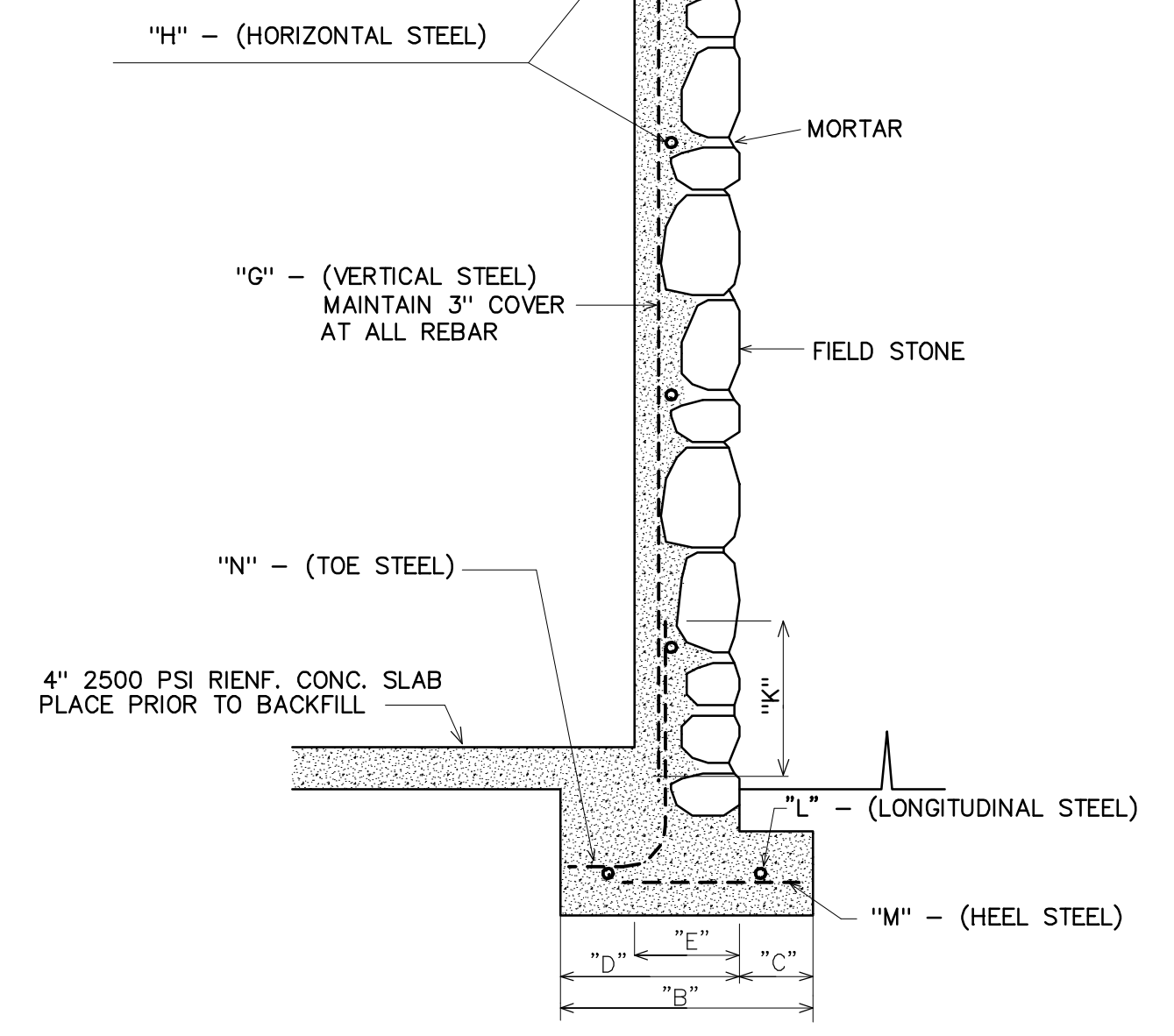
FORM DETAIL 1"=1'



S-5/2 BUILDING SECTION 1/4"=1'
CABIN

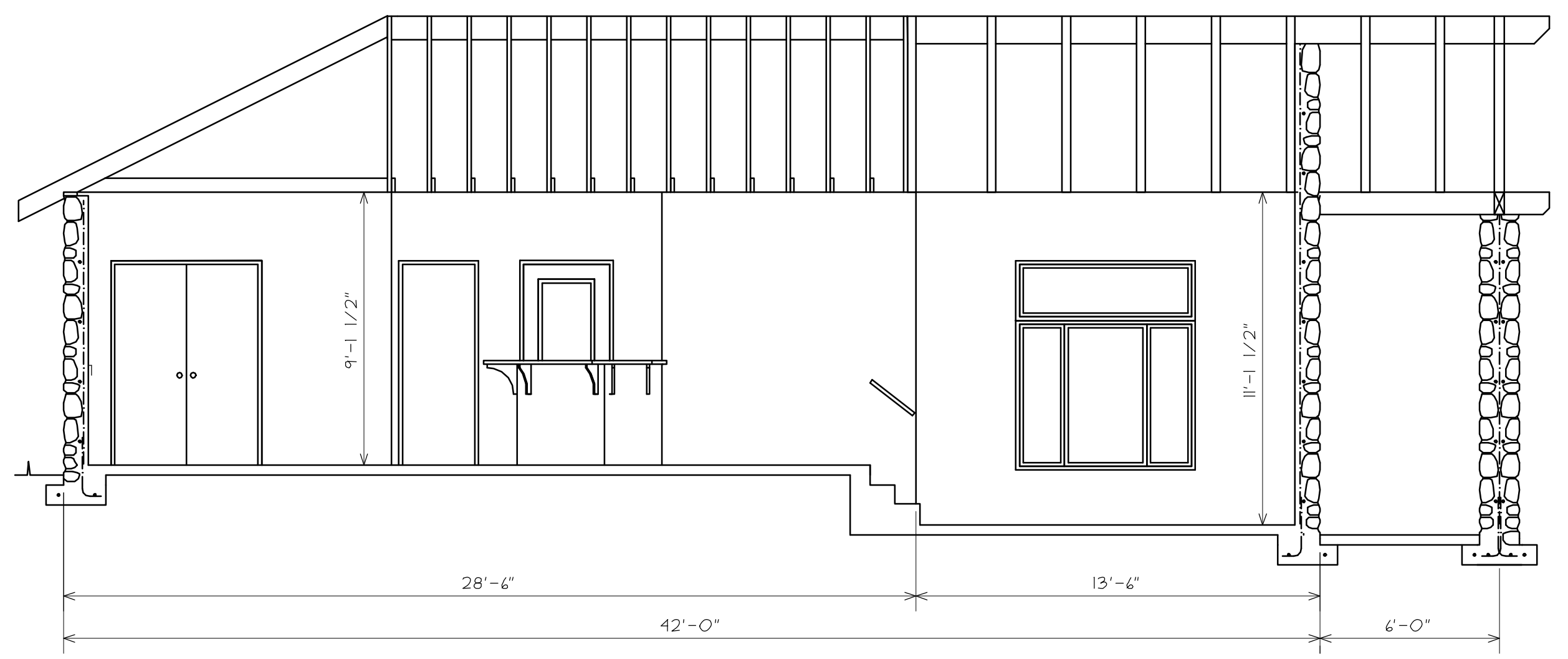


S-4/2 BUILDING SECTION 1/4"=1'
CABIN

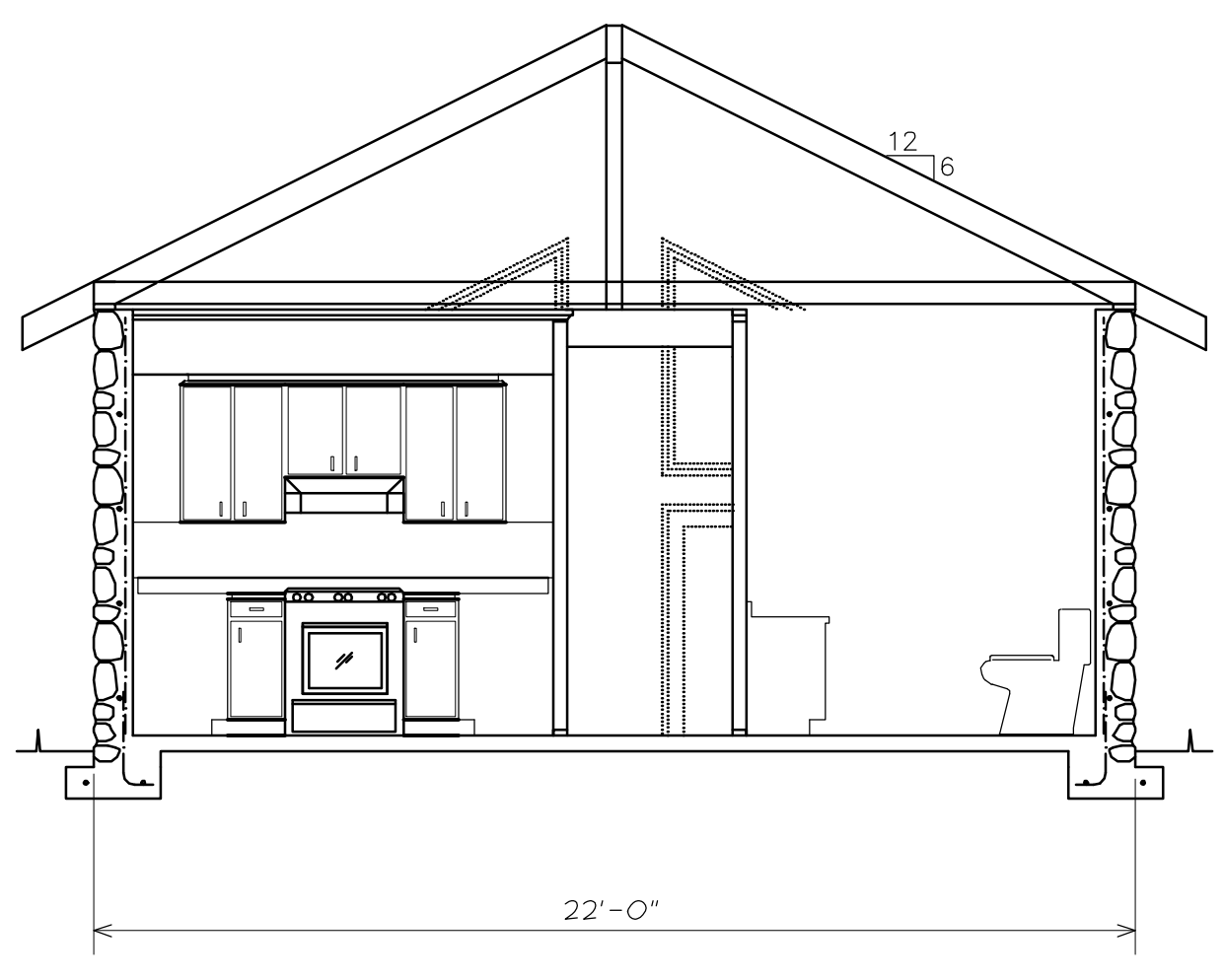


INDEX	DESCRIPTION	6' - 7' BACKFILL	4' - 6' BACKFILL	2' - 4' BACKFILL
A	MAX. BACKFILL HEIGHT	6' - 8"	4' - 6"	2' - 4"
B	TOTAL FOOTING WIDTH	4'-0"	3'-3"	2'-4"
C	HEEL LENGTH	1'-10"	1'-4"	0'-8"
D	TOE LENGTH	2'-2"	1'-11"	1'-8"
E	STEMWALL WIDTH	10"	10"	10"
F	FOOTING DEPTH	10"	10"	8"
G	STEMWALL VERT. STEEL	#4 @ 16"	#4 @ 16"	#4 @ 16"
H	STEMWALL HORIZ. STEEL	#4 @ 16"	#4 @ 16"	#4 @ 16"
K	STEMWALL STEEL SPLICE LENGTH	36"	30"	24"
L	FOOTING LONGITUDINAL STEEL	#4 @ 12"	#4 @ 12"	#4 @ 12"
M	HEEL STEEL	#4 @ 16"	#4 @ 16"	#4 @ 16"
N	TOE STEEL	#4 @ 8"	#4 @ 8"	#4 @ 16"

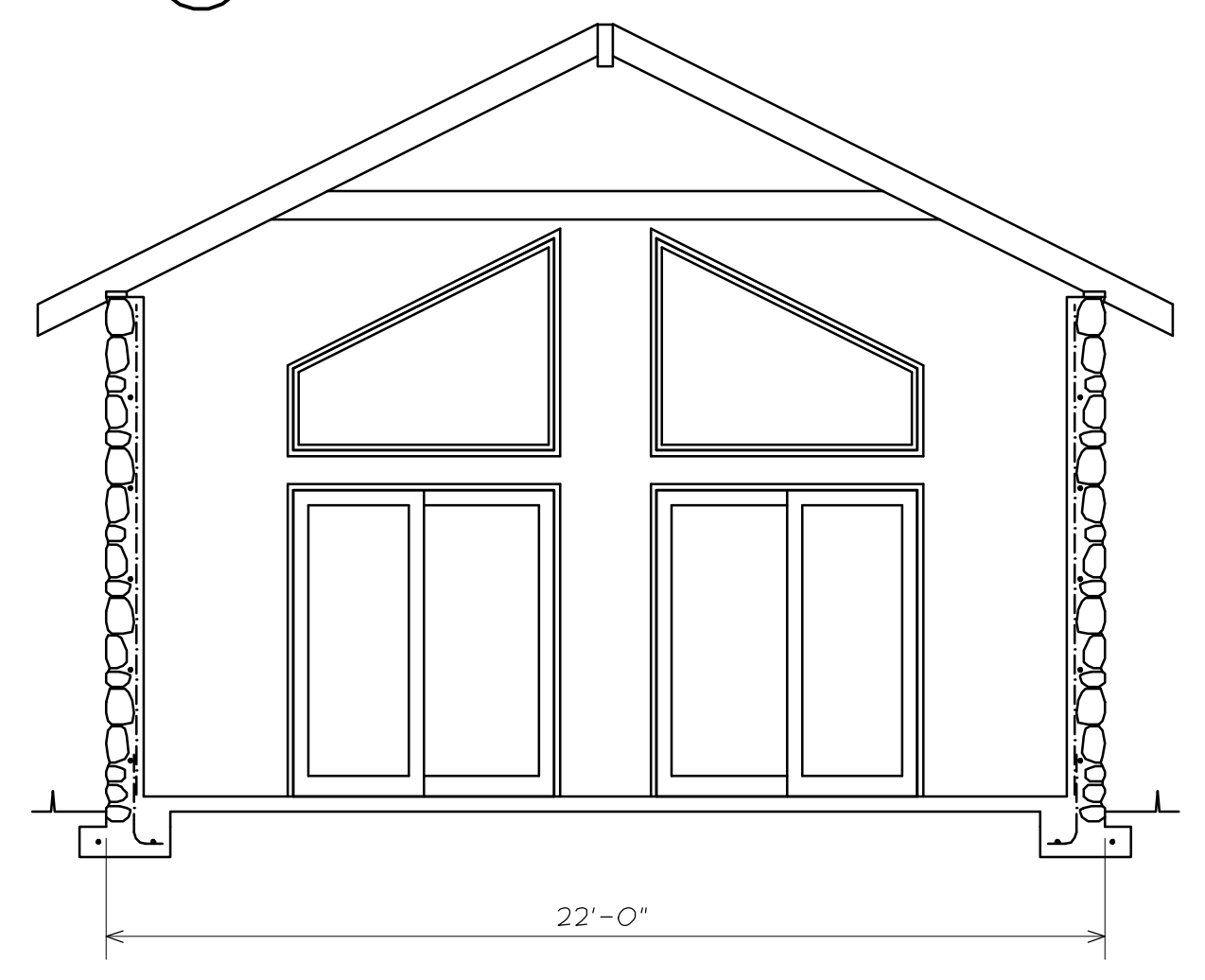
WALL DETAIL 1 3/4"=1'



S-3/2 BUILDING SECTION 1/4"=1'
HOUSE



S-2/2 BUILDING SECTION 1/4"=1'
HOUSE



S-1/2 BUILDING SECTION 1/4"=1'
HOUSE

REVISIONS	BY

SANDERS HOME DESIGNS
31620 BARLOW RD. PHILMATH OR 97370 (541) 929-4294

FISHIN MISSION ADVENTURES
CARETAKER HOUSE & CABINS
LAKE AGUAMILPA TEPIC MEXICO

DRAWN : DS
CHECKED : DS
DATE : 01/01/09
SCALE : AS NOTED
JOB NO. : 09-0103
SHEET
OF 4 SHEETS